

Discover more ebooks! Visit our website:  
fordshopmanual.com

**Buy Now**



# 1969

COURSE 13003 and 1703

# WIRING and VACUUM DIAGRAMS



**SERVICE  
TRAINING**

## DEMO

This DEMO contains only a few pages of the entire manual/product.

Not all Bookmarks work on the Demo, but they do on the full version.

### Features:

- Searchable text
- Printable pages
- Bookmarked for easy navigation
- High Resolution images
- Zoom to see exact details
- Money back Guarantee
- Transfer to USB flash drive support

FORM 7795P-69

Copyright © 2023, Forel Publishing Company, LLC, Woodbridge, Virginia

All Rights Reserved. No part of this book may be used or reproduced in any manner whatsoever without written permission of Forel Publishing Company, LLC. For information write to Forel Publishing Company, LLC, Woodbridge, VA 22192

## **1969 Ford Truck Wiring Diagrams**

**EAN: 978-1-60371-391-7**

**ISBN: 1-60371-391-3**

Forel Publishing Company, LLC  
Woodbridge, VA 22192



License #84356800

This publication contains material that is reproduced and distributed under a license from Ford Motor Company. No further reproduction or distribution of the Ford Motor Company material is allowed without the express written permission of Ford Motor Company.

---

## **Note from the Publisher**

This product was created from the original Ford Motor Company's publication. Every effort has been made to use the original scanned images, however, due to the condition of the material; some pages have been modified to remove imperfections.

---

## **Disclaimer**

Although every effort was made to ensure the accuracy of this book, no representations or warranties of any kind are made concerning the accuracy, completeness or suitability of the information, either expressed or implied. As a result, the information contained within this book should be used as general information only. The author and Forel Publishing Company, LLC shall have neither liability nor responsibility to any person or entity with respect to any loss or damage caused, or alleged to be caused, directly or indirectly by the information contained in this book. Further, the publisher and author are not engaged in rendering legal or other professional services. If legal, mechanical, electrical, or other expert assistance is required, the services of a competent professional should be sought.

---

# 1969 BRONCO, ECONOLINE AND P-SERIES TRUCK WIRING DIAGRAMS

## SECTION 8 INDEX

### AIR CONDITIONER

Econoline .....8-E25

### ALTERNATOR

Bronco 55 Amp .....8-E3  
Econoline .....8-E22 & E23

### AUTOMATIC TRANSMISSION

Econoline .....8-E30

### CHARGING

Bronco .....8-E4 & E5  
P-Series  
Gas Engine .....8-E13  
Diesel Engine .....8-E14  
Econoline .....8-E22, E23, E26 & E27

### CIGAR LIGHTER

Bronco .....8-E8  
Econoline .....8-E29

### EXTERIOR LIGHTS

Bronco .....8-E6 & E7  
P-Series  
Gas Engine .....8-E16  
Diesel Engine .....8-E17  
Econoline .....8-E20 & E21

### FUEL SYSTEMS

Bronco Auxiliary Fuel Tank .....8-E11  
P-Series Fuel Shut-off .....8-E18

### GAUGES

Bronco .....8-E4 & E5  
P-Series  
Gas Engine .....8-E13  
Diesel Engine .....8-E14  
Econoline .....8-E22, E23, E26 & E27

### HEATER

Bronco .....8-E12  
Econoline  
(Fresh Air) .....8-E24  
(Auxiliary) .....8-E24

### HORNS

Bronco .....8-E10  
P-Series .....8-E18  
Econoline .....8-E28

### IGNITION

Bronco .....8-E4 & E5  
P-Series  
Gas Engine .....8-E13  
Diesel Engine .....8-E14  
Econoline .....8-E26 & E27

### INSTRUMENT PANEL

Bronco .....8-E2  
Econoline .....8-E19

### INSTRUMENT LIGHTS

Bronco .....8-E8  
P-Series  
Gas Engine .....8-E16  
Diesel Engine .....8-E17  
Econoline .....8-E29

### STARTING

Bronco .....8-E4 & E5  
P-Series  
Gas Engine .....8-E13 & E15  
Diesel Engine .....8-E14  
Econoline .....8-E26 & E27

### AUTOMATIC TRANSMISSION .....8-E30

### TURN SIGNALS

Bronco .....8-E6 & E7  
P-Series  
Gas Engine .....8-E16  
Diesel Engine .....8-E17  
Econoline .....8-E20 & E21

### WINDSHIELD WIPERS AND WASHERS

Bronco .....8-E9  
Econoline .....8-E31

## HOW TO USE THE WIRING DIAGRAMS

THE INDEX PAGE IS THE FIRST PAGE IN EACH SECTION. EACH ELECTRICAL SCHEMATIC WILL HAVE A NOTATION AS TO THE SOURCE OF POWER FOR THAT SYSTEM. ALL WIRES WILL BE SHOWN AS SINGLE LINES TO PROVIDE A CLEAR UNDERSTANDING OF THE DIAGRAMS. TO TRACE A CIRCUIT, IT IS RECOMMENDED TO START AT THE GROUND CIRCUIT OF THE INOPERATIVE COMPONENT, TRACE IT THROUGH ALL CONNECTORS TO THE SOURCE, AND NOTE THE POSSIBLE TROUBLE AREAS AND POINTS OF MOST CONVENIENT ACCESS. WIRE CONNECTORS WILL BE IDENTIFIED ON THE SCHEMATIC AND THE PICTORIAL DRAWINGS, THIS WILL SHOW THE TECHNICIAN THE LOCATION OF THE CONNECTORS. MOST WIRE CONNECTORS ARE SHOWN IN OPEN BOOK FASHION. A WIRE ON THE TOP RIGHT OF A CONNECTOR (OPEN SIDE BY SIDE) WILL BE ON THE TOP LEFT SIDE OF THE OTHER HALF OF THE CONNECTOR. SEE FIGURE 1 (WIRE #140 TO #140A, ETC.).

WIRE DISCONNECTS AND CONNECTORS WILL ALL BE BLACK UNLESS A COLOR CODE IS NOTED ON THE DIAGRAM. THE COLORED DISCONNECTS AND CONNECTORS ARE TO AID THE TECHNICIAN IN FINDING THE PROPER CIRCUIT TO BE TESTED OR TRACED. THE ELECTRICAL SYMBOLS AND THEIR MEANINGS ARE NOTED ON EACH DIVIDER PAGE TO PROVIDE A CLEARER UNDERSTANDING OF THE DIAGRAMS. PICTORIAL DRAWINGS OF A COMPONENT WILL INCLUDE THE SPECIFIC LOCATION OF SOME COMPONENTS IN CASES WHERE IT IS DIFFICULT TO DETERMINE IF THE COMPONENT IS UNDER THE INSTRUMENT PANEL OR IN THE ENGINE COMPARTMENT.

RELAYS AND SWITCHES ARE SHOWN IN THE "SYSTEM OFF" POSITION. IF A VEHICLE SPECIFIC WIRE COLOR IN A CONNECTOR DOES NOT MATCH THE DIAGRAM SHOWN, IT CAN USUALLY BE IDENTIFIED BY COMPARING THE OTHER COLORS SHOWN AT THE WIRE CONNECTORS. SPECIFIC WIRE COLOR DEVIATIONS IN THE MANUFACTURING OF A WIRE HARNESS ARE USUALLY FOR A SHORT DURATION.

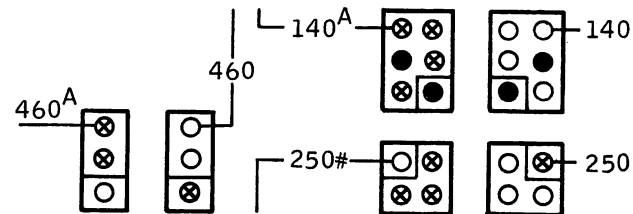
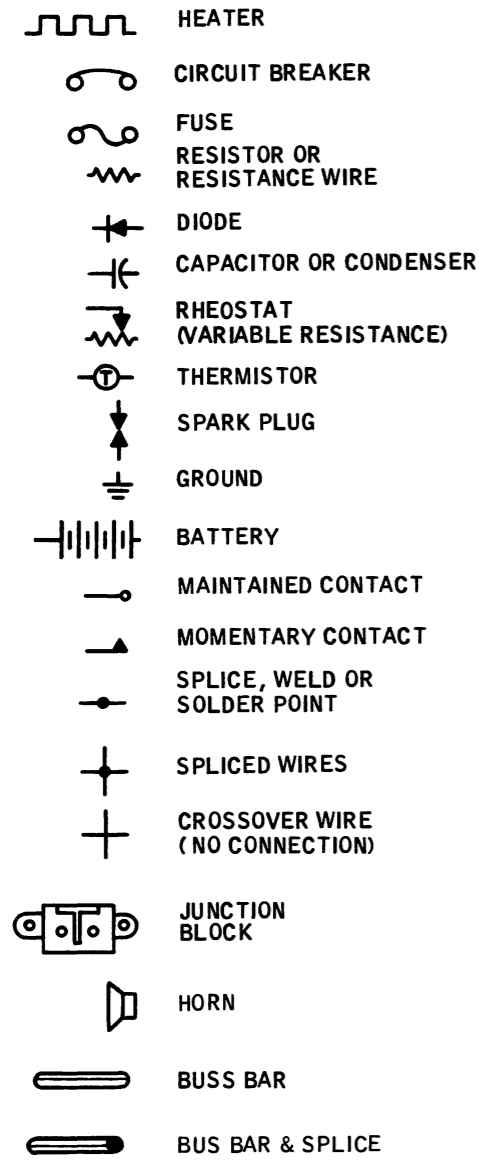
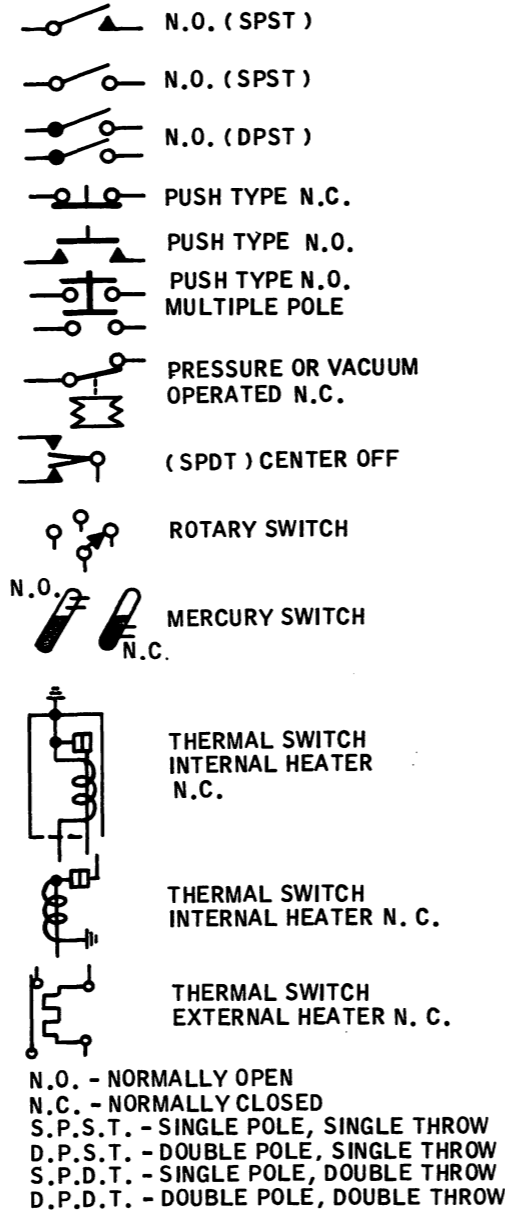


Figure 1

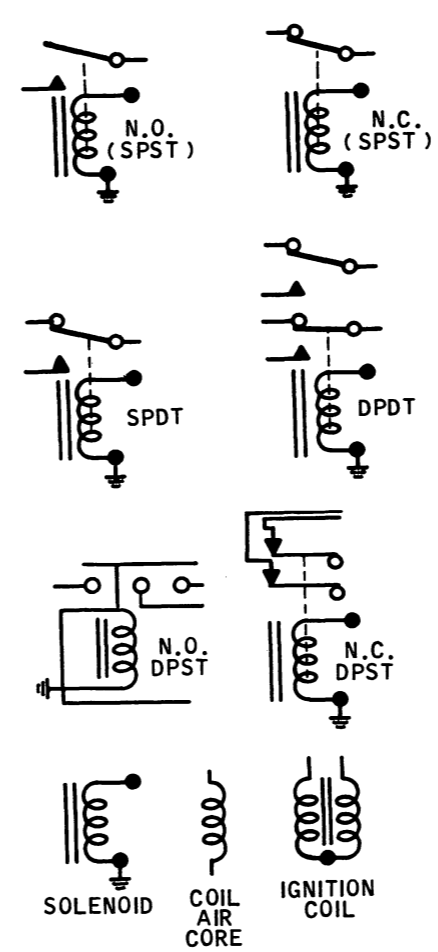
**CIRCUIT SYMBOLS**



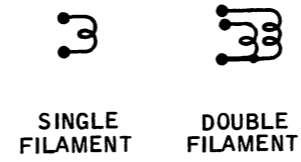
**SWITCHES**



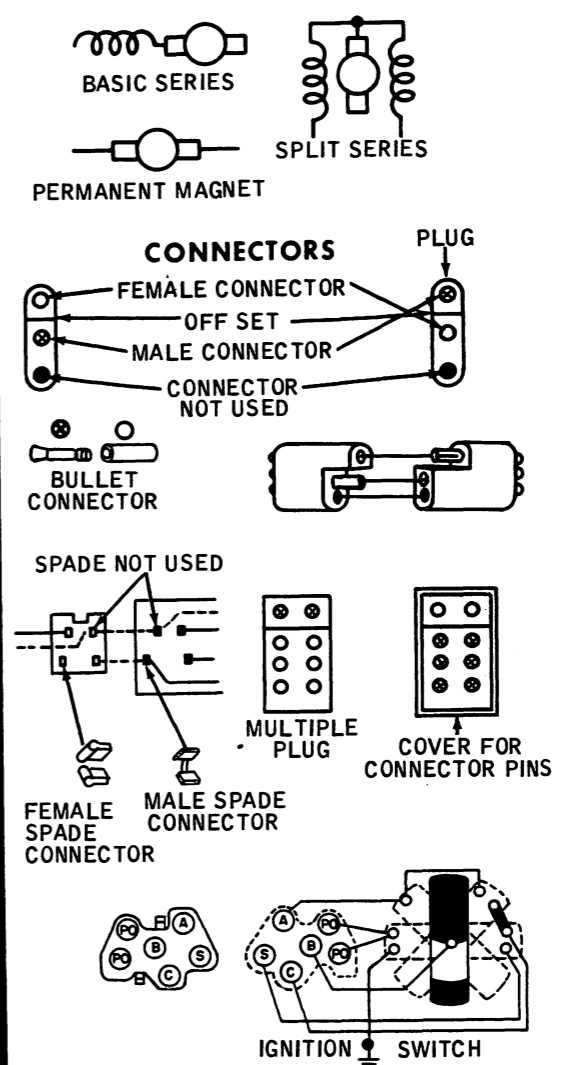
**RELAYS**



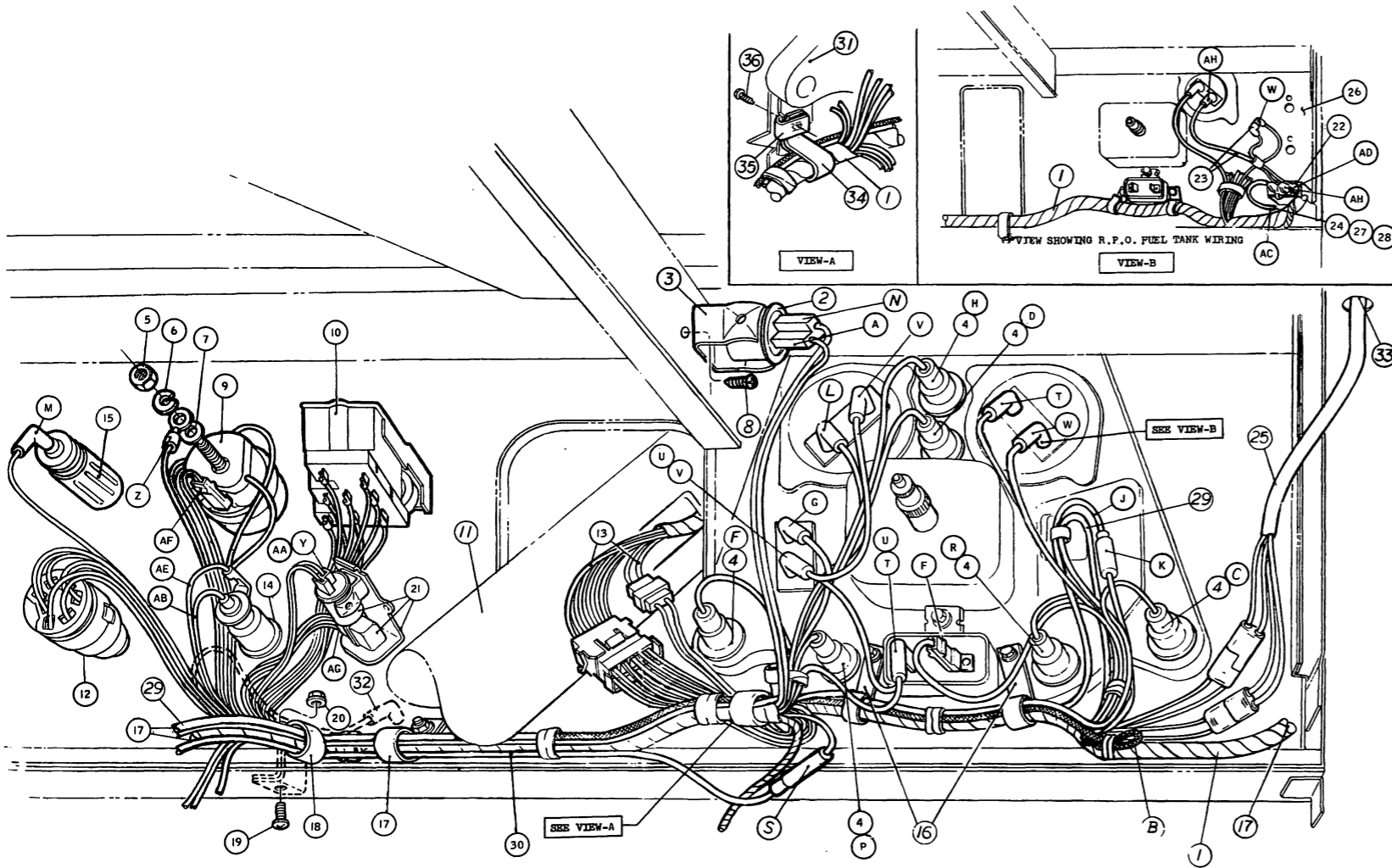
**LAMPS**



**MOTORS**

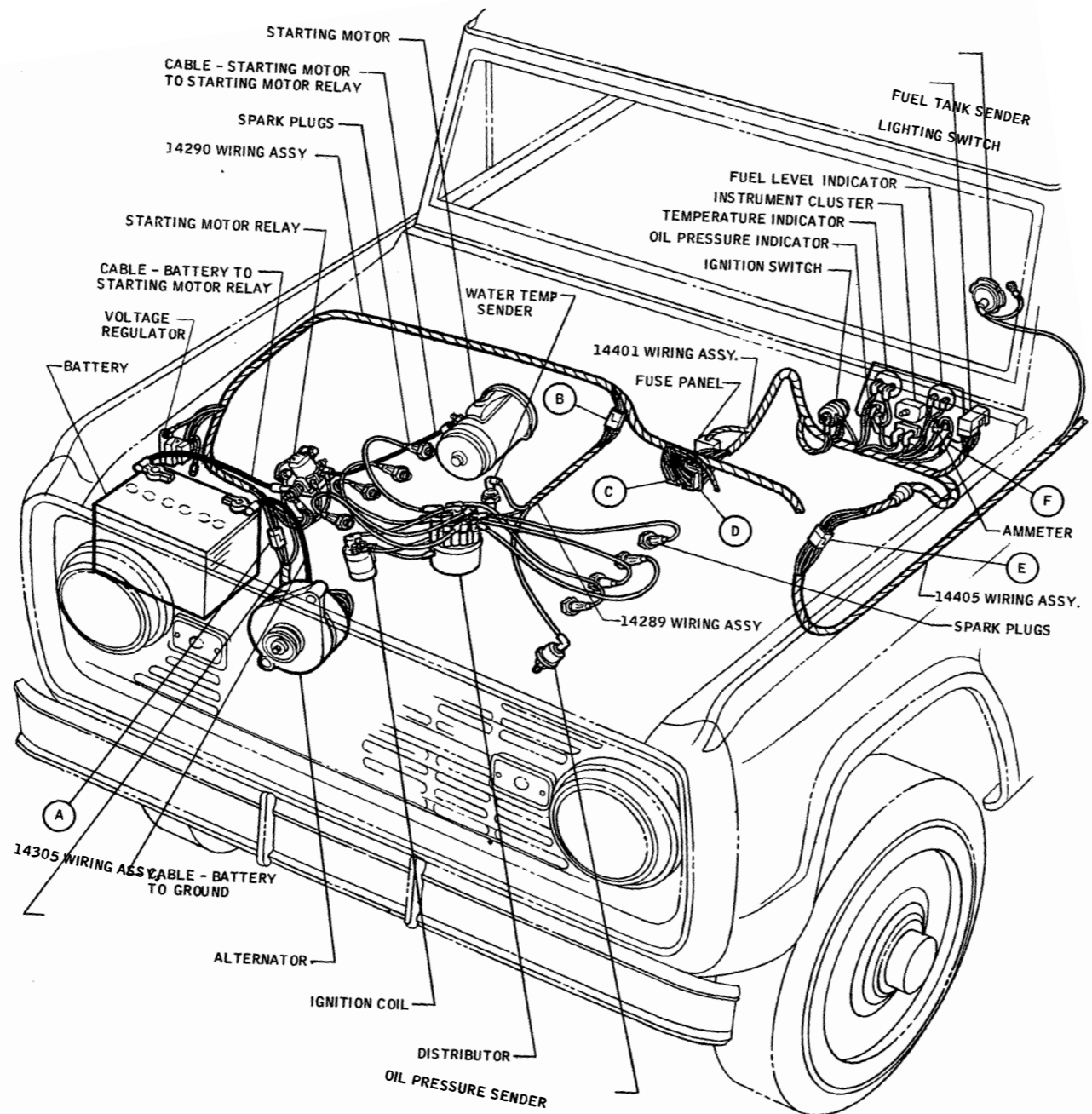


~ AND/OR \* WIRE FUNCTION NOT APPLICABLE TO THIS CIRCUIT  
 (14), (16) ETC. ALL NUMBERS IN PARENTHESIS ( ) INDICATE WIRE GAGES  
 (A), (B), ETC. ALL LETTERS CIRCLED INDICATE CONNECTION LOCATION.  
 ★ TO POWER SOURCE

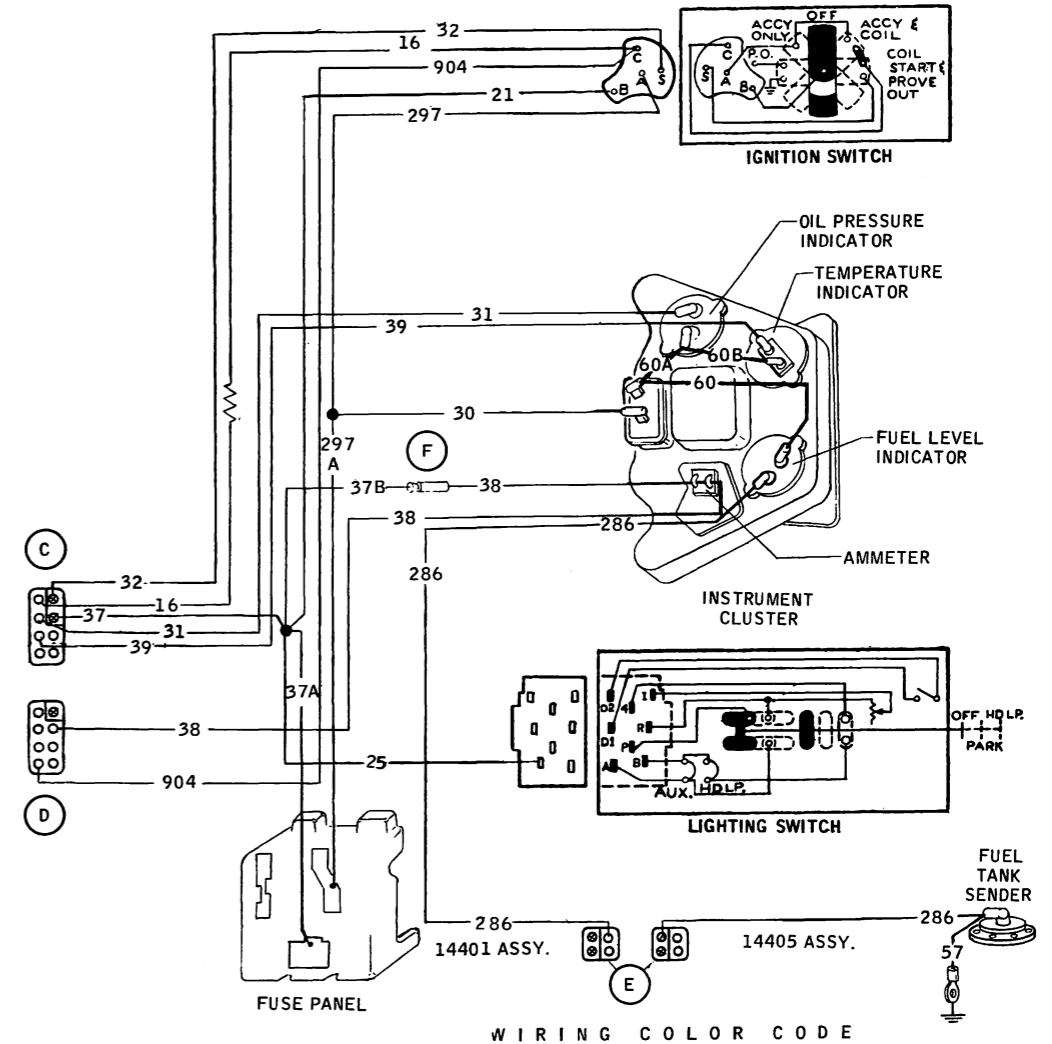
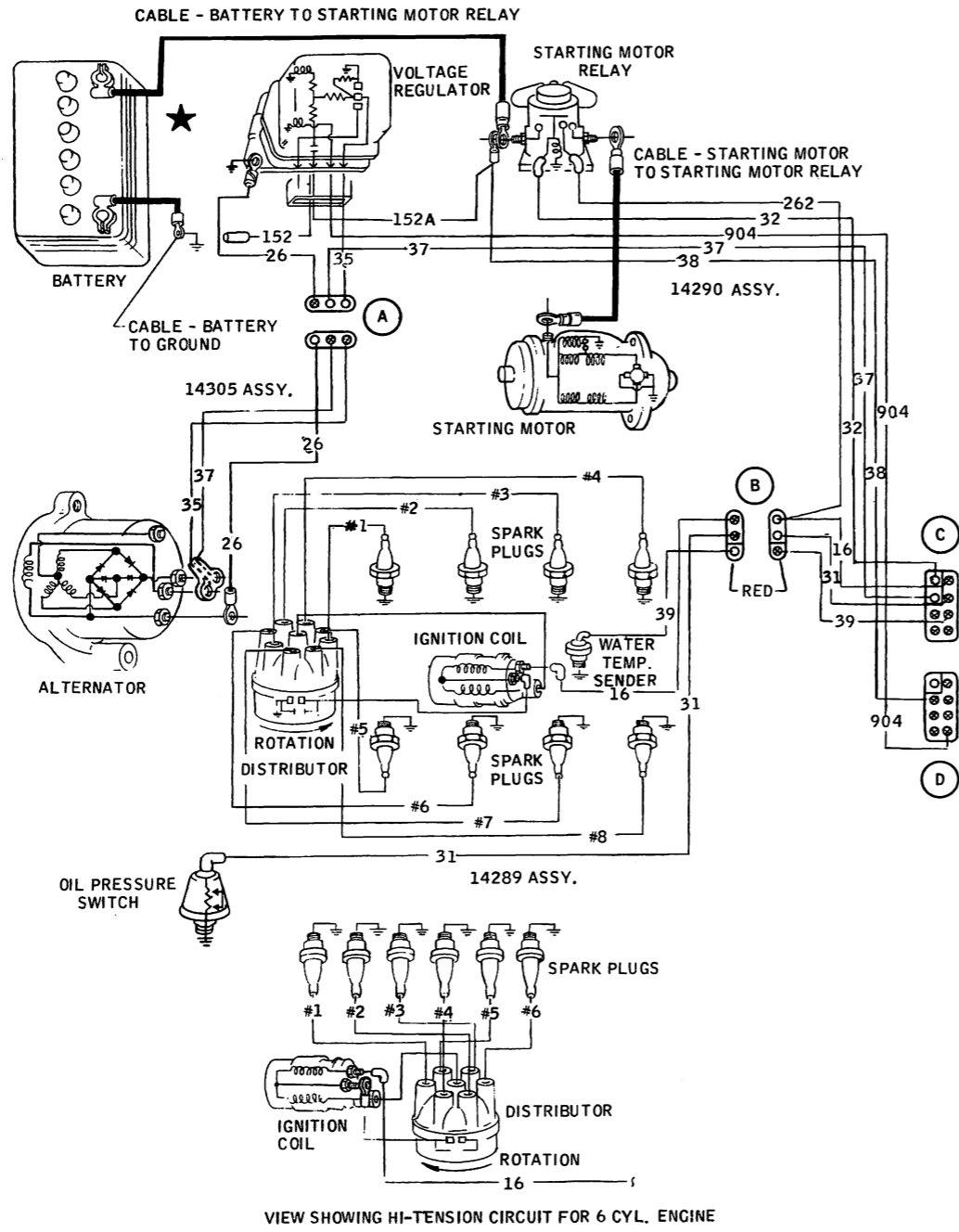


- ① 14401 WIRING ASSY. STD. PROD. (55 AMP.)
- ② 14401 WIRING ASSY. R.P.O. (55 AMP.)
- ③ 13350 FLASHER ASSY.
- ④ 13351 BRACKET
- ⑤ 13466 BULB ASSY. (6-REQD.)
- ⑥ NUT
- ⑦ LOCK WASHER
- ⑧ WASHER
- ⑨ SCREW
- ⑩ IGNITION SWITCH
- ⑪ LIGHTING SWITCH
- ⑫ STEERING COLUMN
- ⑬ W/SHIELD WIPER & WASHER SWITCH
- ⑭ STEERING COLUMN WIRING
- ⑮ DUAL BRAKE WARNING LAMP
- ⑯ CIGAR LIGHTER (R.P.O.)
- ⑰ EXISTING CLIPS ON INSTR. CLUSTER
- ⑱ CLIP
- Ⓐ 8A ORANGE-YELLOW STRIPE
- Ⓑ 16 PINK
- Ⓒ 19B BLUE-RED STRIPE
- Ⓓ 19C BLUE-RED STRIPE
- Ⓔ 19D BLUE-RED STRIPE
- Ⓕ 30 BLACK-GREEN STRIPE
- Ⓖ 31 WHITE-RED STRIPE
- Ⓗ 34 GREEN-BLACK STRIPE
- Ⓙ 37B BLACK-YELLOW STRIPE
- Ⓚ 38 BLACK
- Ⓛ 39 RED-WHITE STRIPE
- Ⓜ 40 BLUE-WHITE STRIPE
- Ⓝ 44 BLUE
- Ⓟ 49 WHITE-BLUE STRIPE
- Ⓡ 50 GREEN-WHITE STRIPE
- Ⓢ 53 BLACK-BLUE STRIPE
- Ⓣ 60 BLACK-WHITE STRIPE
- Ⓤ 60A BLACK-WHITE STRIPE
- Ⓥ 60B BLACK-WHITE STRIPE
- Ⓦ 286 ORANGE
- Ⓨ 385 WHITE-RED STRIPE
- Ⓩ 297 BLACK-GREEN STRIPE

- ⑲ SCREW
- ⑳ NUT
- ㉑ EMERGENCY FLASHER
- ㉒ 9A050 SWITCH ASSY.
- ㉓ 14407 WIRING ASSY.
- ㉔ 14406 WIRE ASSY.
- ㉕ 17B587 WIRING ASSY.
- ㉖ INSTRUMENT PANEL
- ㉗
- ㉘
- ㉙ 55 AMP. ALZ. ONLY
- ㉚ 134709 WIRING ASSY. R.P.O.
- ㉛ INSTRUMENT CLUSTER
- ㉜ ROUTE LEAD FOR CIGAR LIGHTER THRU CLIP WHEN LIGHTER IS NOT INSTALLED
- ㉝
- ㉞ CLIP
- ㉟ CLIP
- ㊱ EXISTING NUT ON INSTR. CLUSTER
- ㊲ EXISTING SCREW.
- ⒶⓅ 383 RED-WHITE STRIPE
- ⒶⒹ 640 RED-YELLOW STRIPE
- ⒶⒸ 29 YELLOW-WHITE STRIPE
- ⒶⒹ 286 ORANGE
- ⒶⒺ 977 VIOLET
- ⒶⓅ 977A VIOLET
- ⒶⒼ BLACK INSULATOR
- ⒶⒽ 286A ORANGE



**1969 BRONCO IGNITION, STARTING, POWER, CHARGING & GAUGES**



**WIRING COLOR CODE**

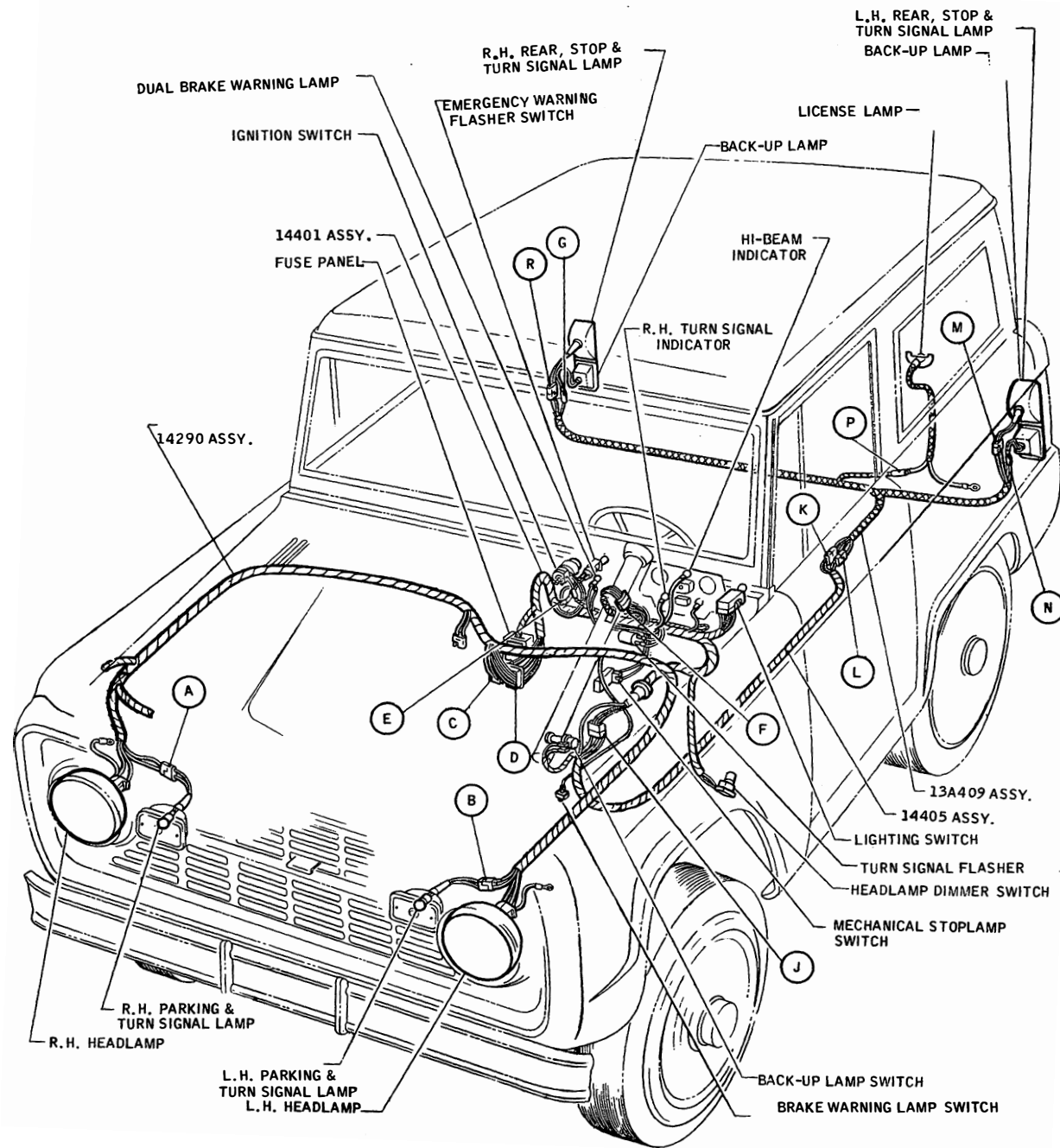
ALL CONNECTORS ARE BLACK UNLESS OTHERWISE SPECIFIED.

16	RED-GREEN STRIPE	37B	37A	37	BLACK-YELLOW STRIPE	
016	PINK (RESISTOR WIRE)	57	38		BLACK	
21	YELLOW	60 THRU 60B	39		RED-WHITE STRIPE	
25	BLACK-ORANGE STRIPE	262			BLACK-WHITE STRIPE	
26	BLACK-RED STRIPE	35	286		BROWN	
297A	297	30	286		ORANGE	
		31	904		GREEN-RED STRIPE	
		32			RED-BLUE STRIPE	
					●	SPLICE
					⊥	GROUND

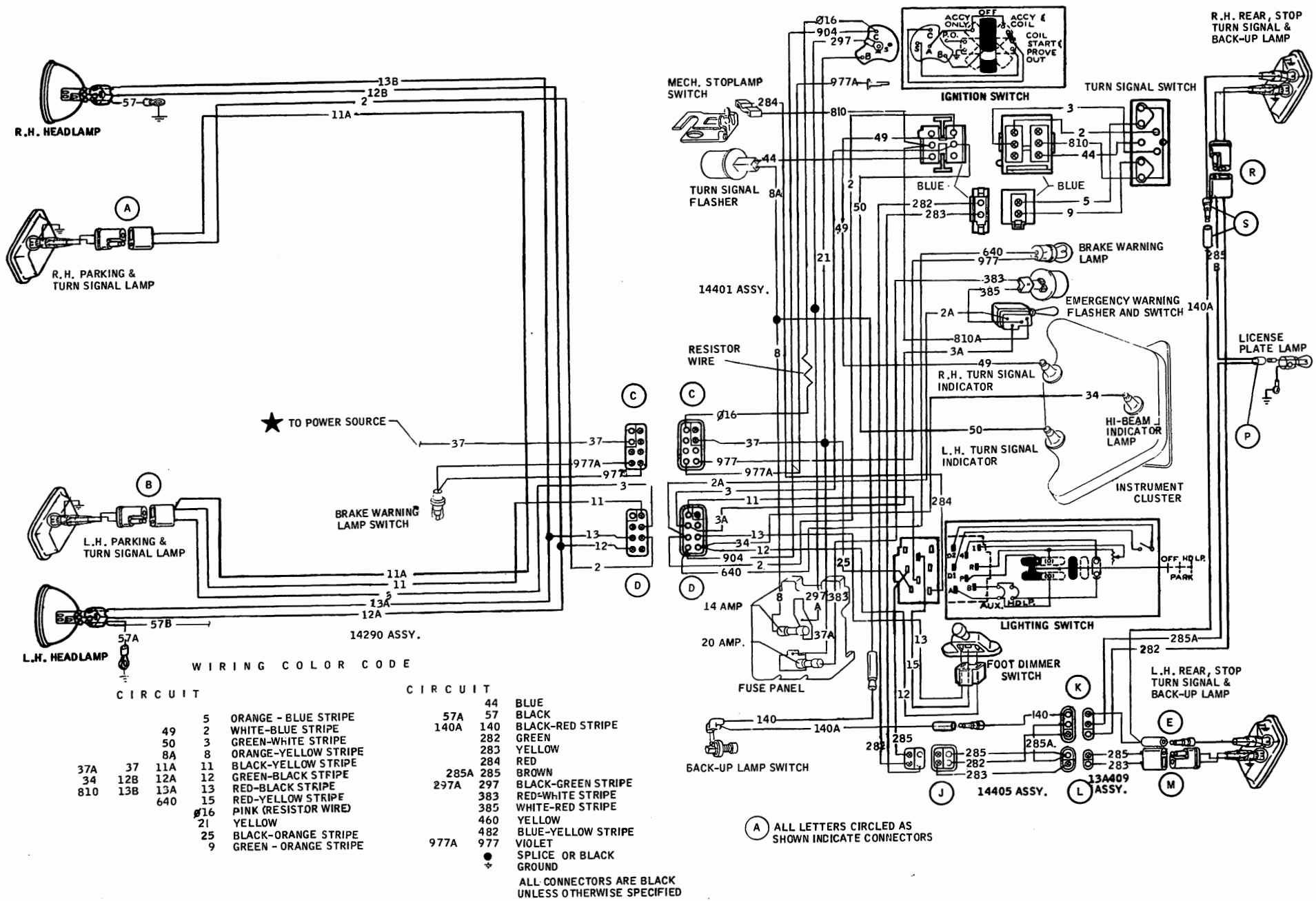
(A) ALL LETTERS CIRCLED AS SHOWN INDICATE CONNECTORS

**1969 BRONCO IGNITION, STARTING, POWER, CHARGING & GAUGES**

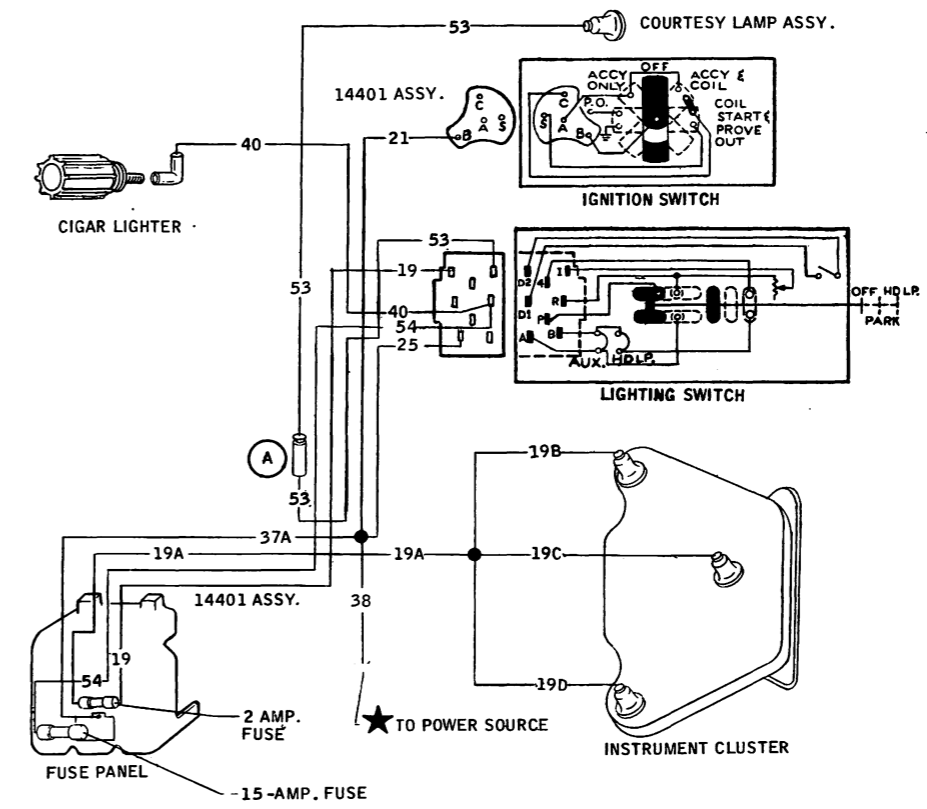
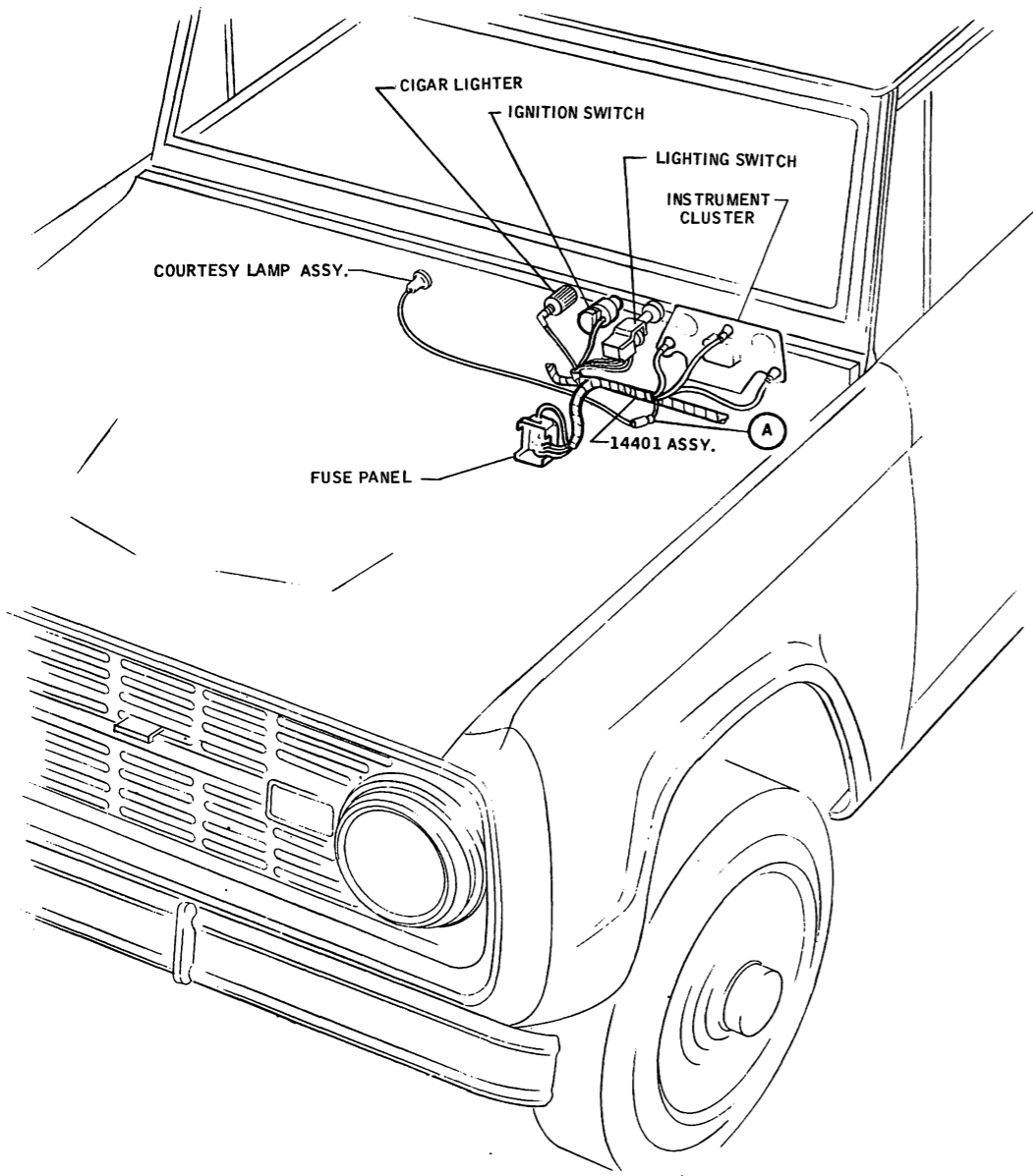




**1969 BRONCO EXTERIOR LAMPS & TURN SIGNALS**



# 1969 BRONCO EXTERIOR LAMPS & TURN SIGNALS

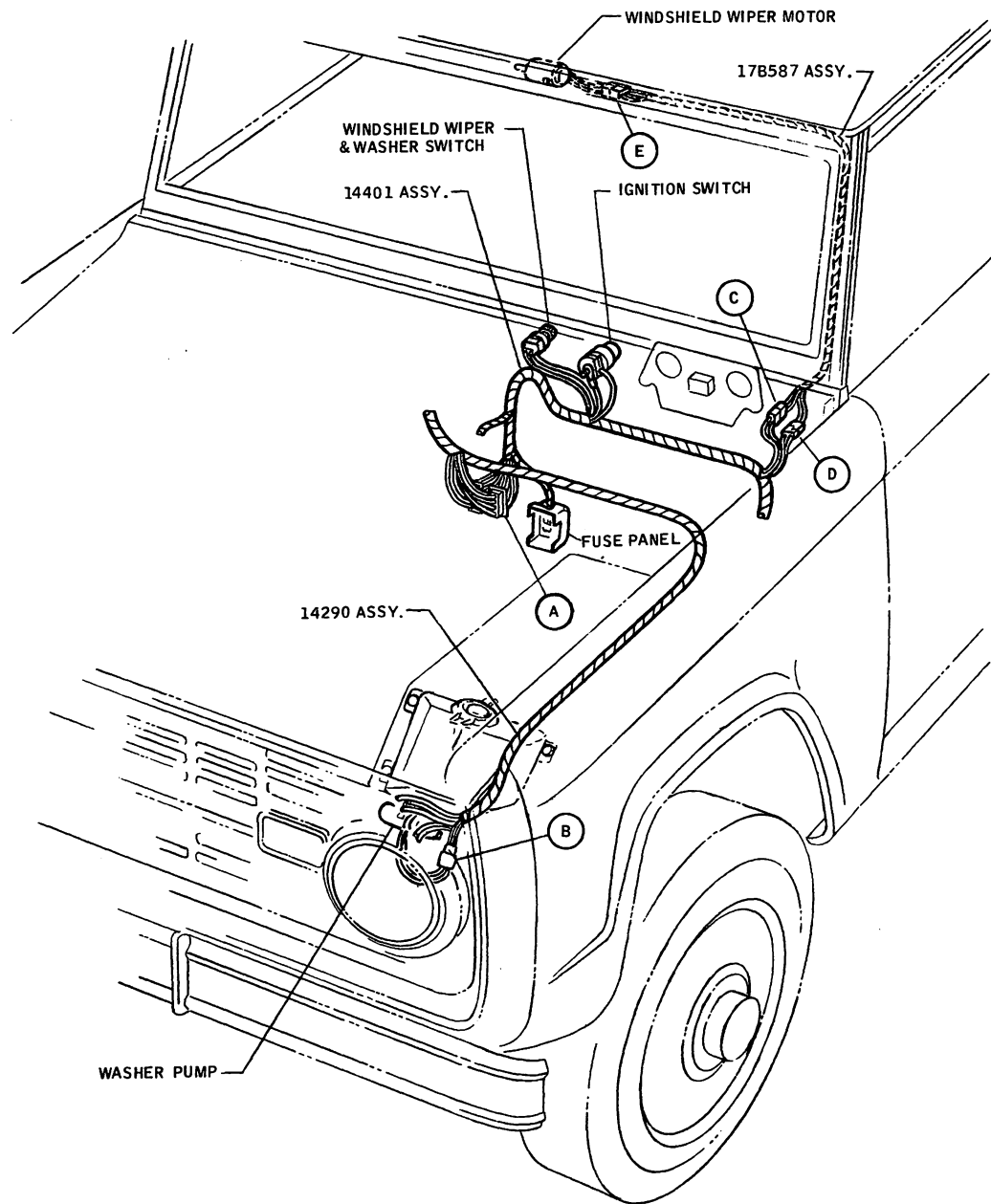


WIRING COLOR CODE

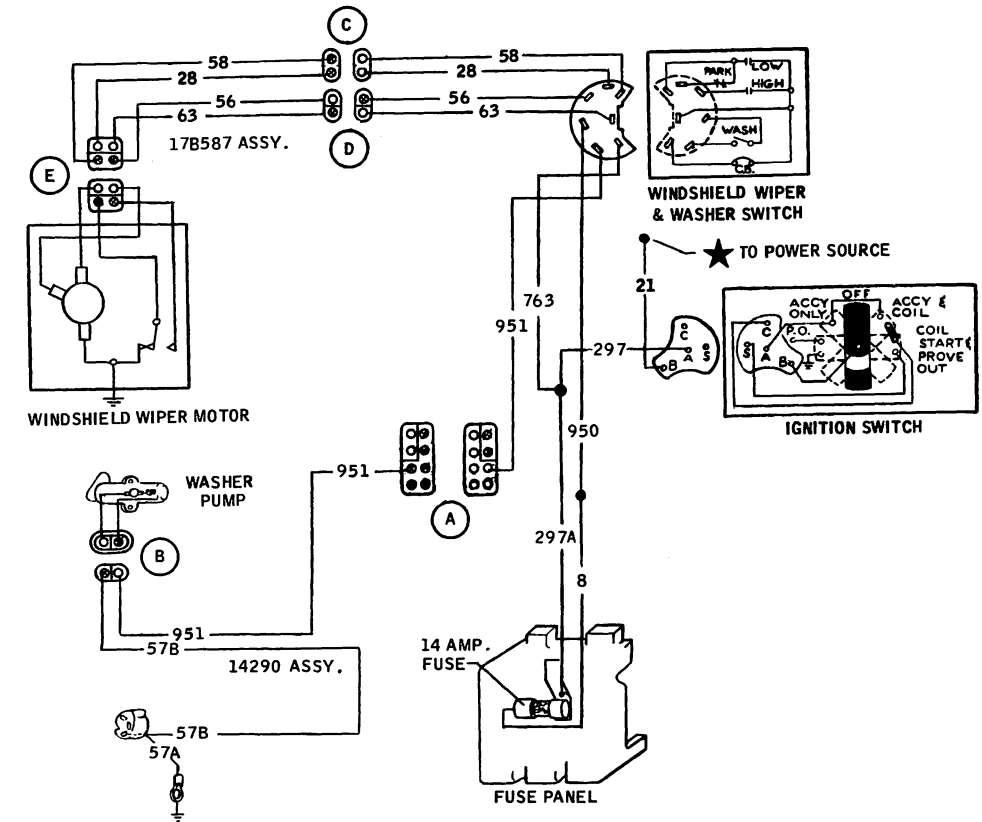
38	BLACK
19D THRU 19	BLUE-RED STRIPE
21	YELLOW
25	BLACK-ORANGE STRIPE
37B 37A	BLACK-YELLOW STRIPE
40	BLUE-WHITE STRIPE
53	BLACK-BLUE STRIPE
54	GREEN-YELLOW STRIPE
•	SPLICE
⊥	GROUND

(A) ALL LETTERS CIRCLED AS SHOWN INDICATE CONNECTORS

1969 BRONCO INTERIOR LAMPS, INSTRUMENT LAMPS, CIGAR LIGHTER



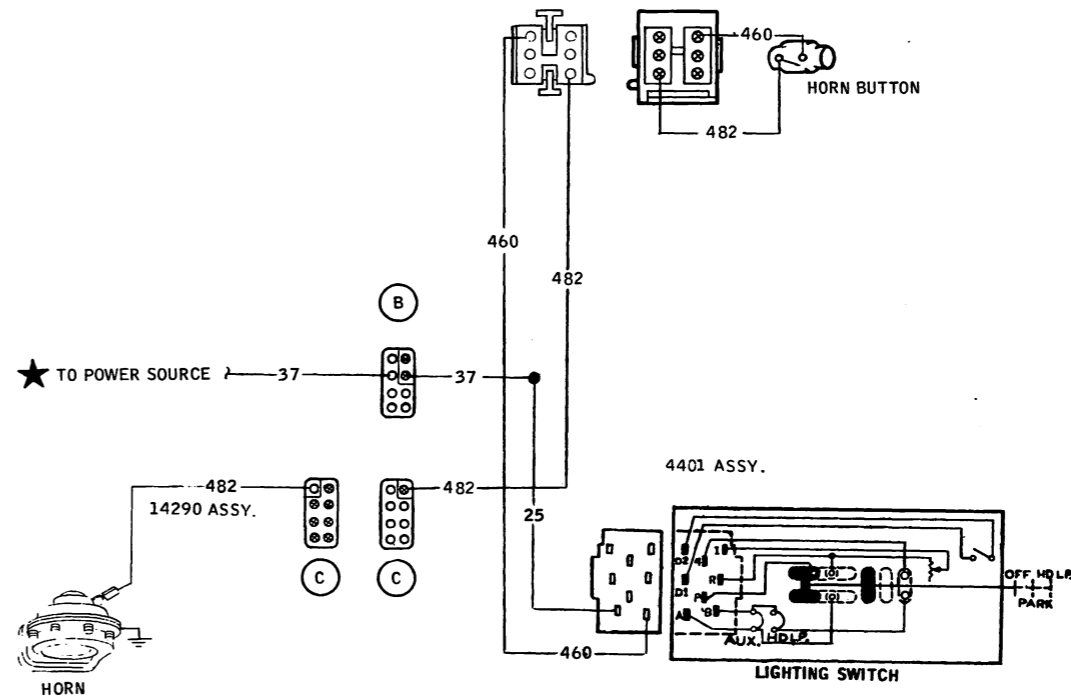
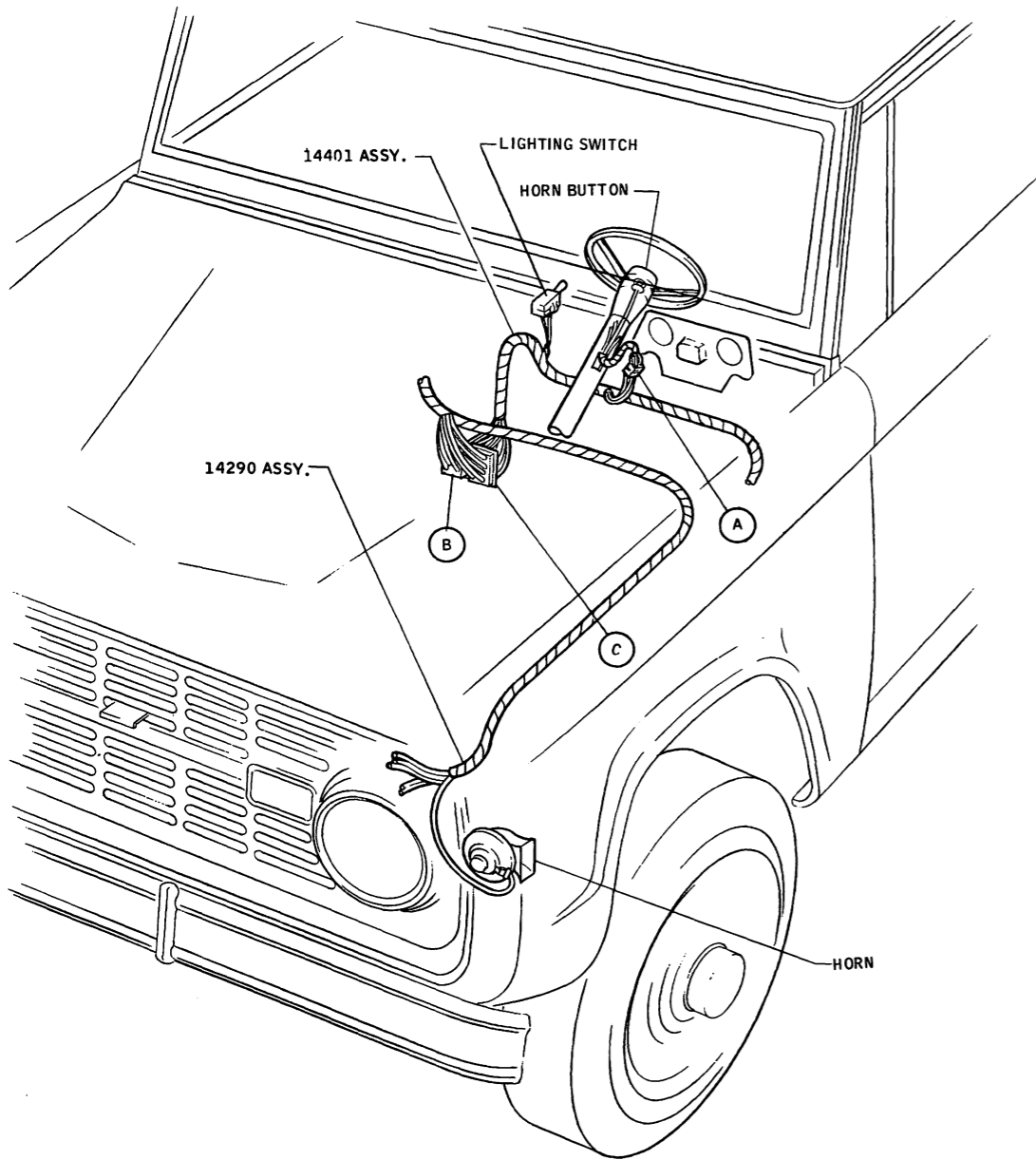
# 1969 BRONCO WINDSHIELD WASHER



## WIRING COLOR CODE

CIRCUIT	
8	ORANGE-YELLOW STRIPE
21	YELLOW
57B 57A	BLACK
56	BLUE
950	WHITE
63	RED
951	GREEN-BLACK STRIPE
297A	BLACK-GREEN STRIPE
763	ORANGE-WHITE STRIPE
•	SPLICE
⊥	GROUND

(A) ALL LETTERS CIRCLED AS SHOWN INDICATE CONNECTORS



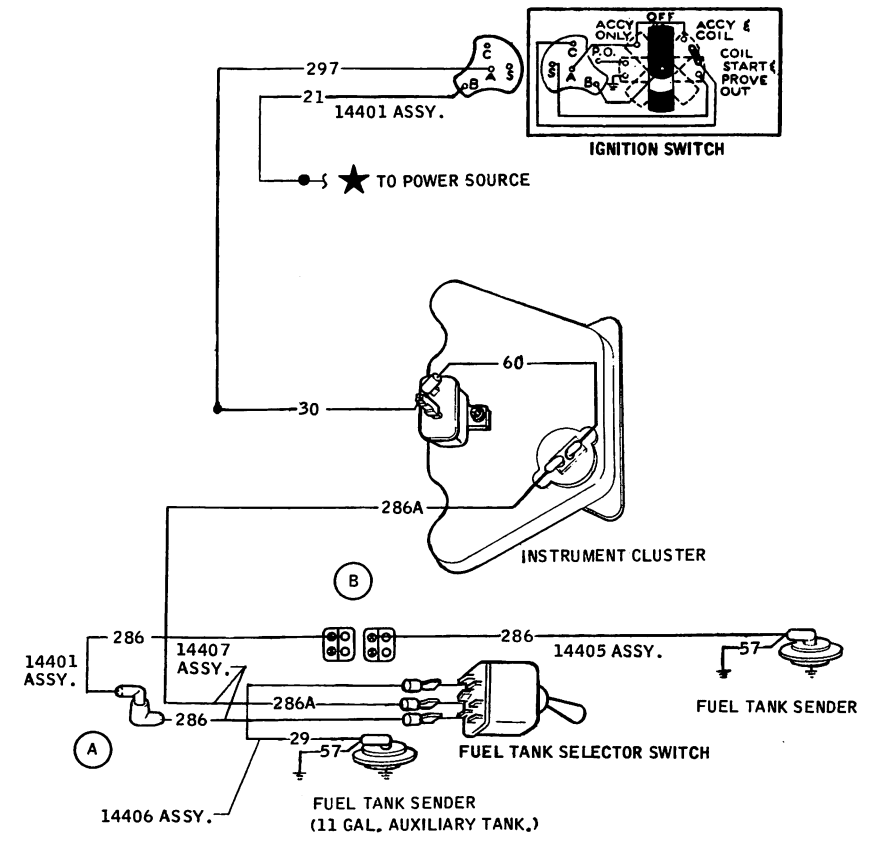
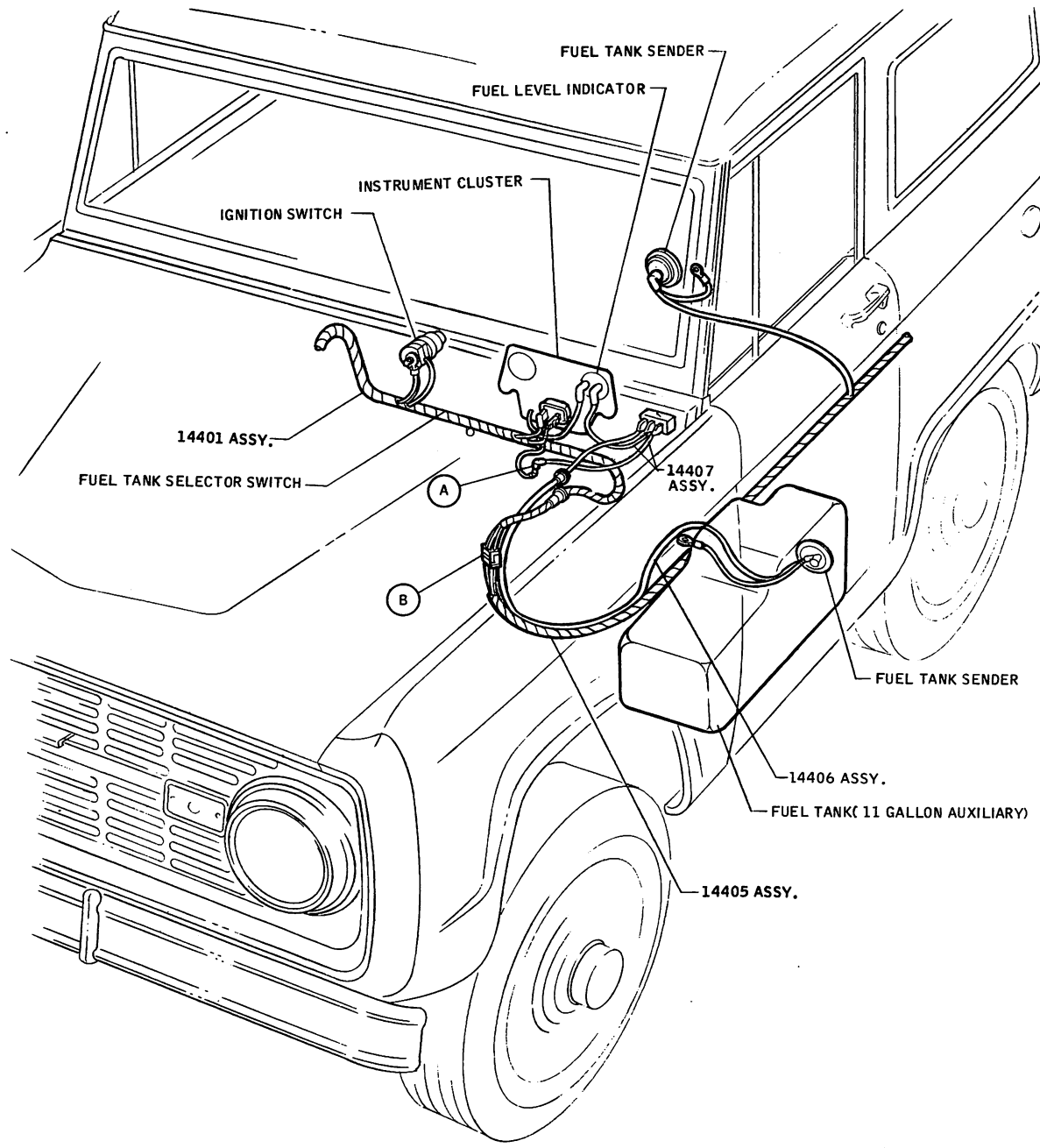
WIRING COLOR CODE

CIRCUIT

- 25 BLACK-ORANGE STRIPE
- 37 BLACK-YELLOW STRIPE
- 460 YELLOW
- 482 BLUE-YELLOW STRIPE

- SPLICE
- ↓ GROUND

(A) ALL LETTERS CIRCLED AS SHOWN INDICATE CONNECTORS

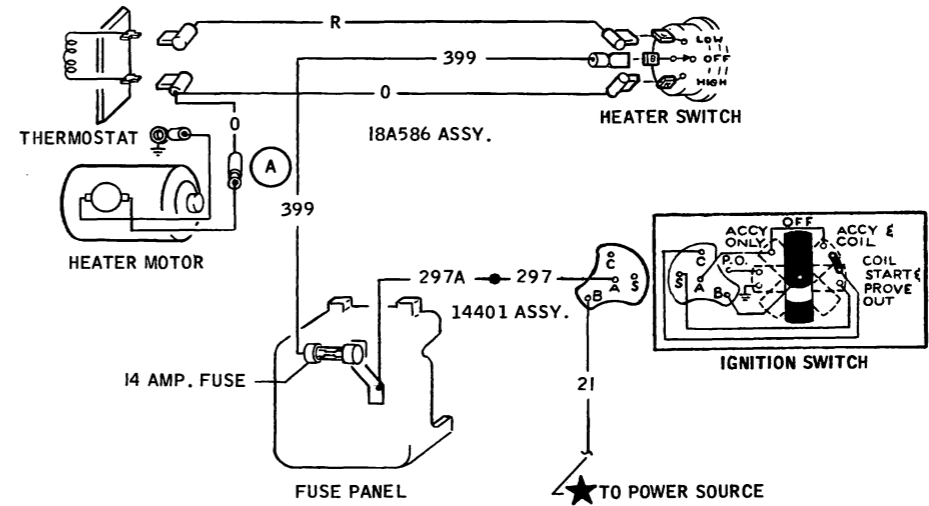
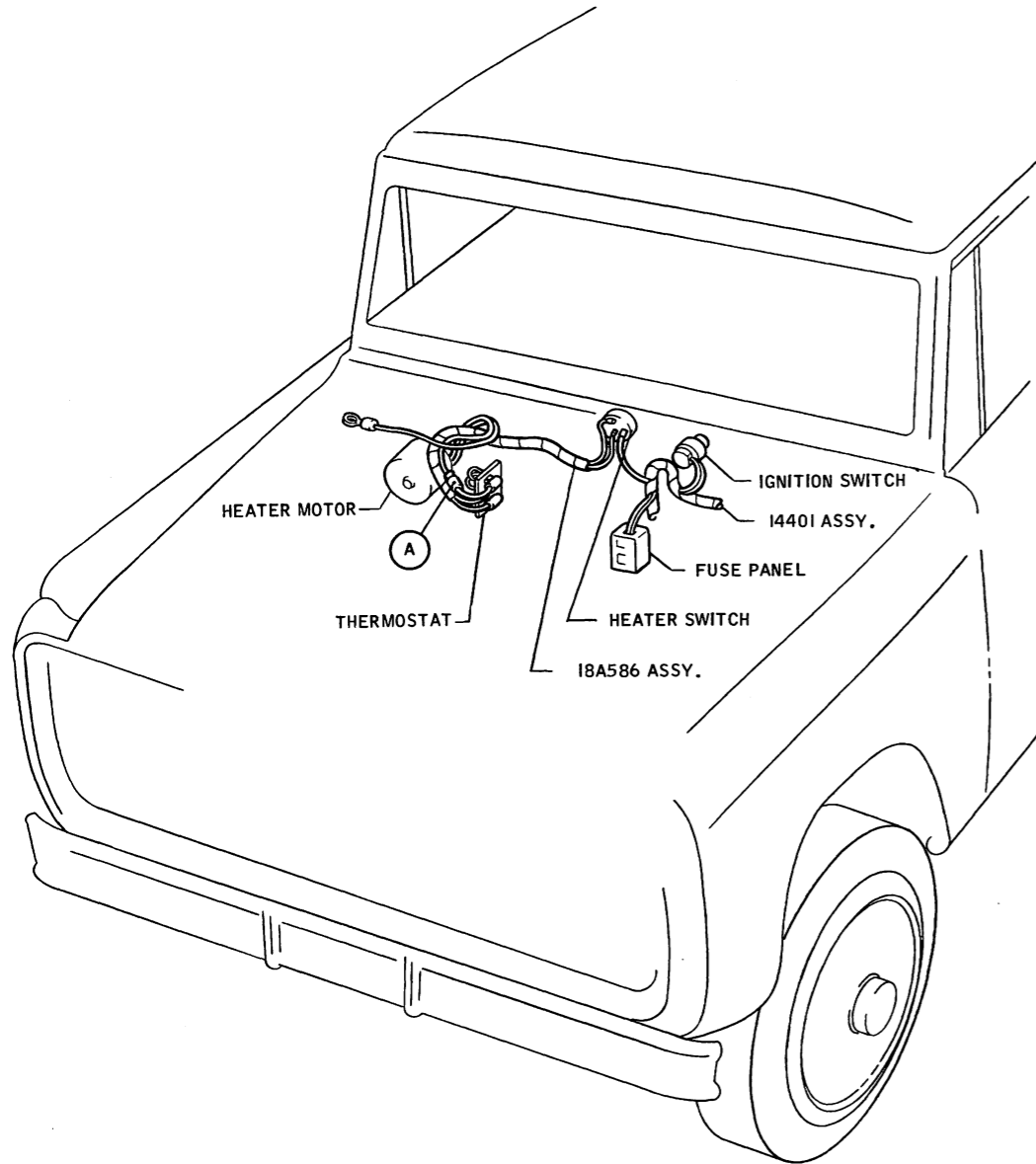


WIRING COLOR CODE

- 21 YELLOW
- 29 YELLOW-WHITE STRIPE
- 297 BLACK-GREEN STRIPE
- 30 BLACK
- 57 BLACK-WHITE STRIPE
- 286 ORANGE
- OR ORANGE
- SPLICE
- ⊥ GROUND

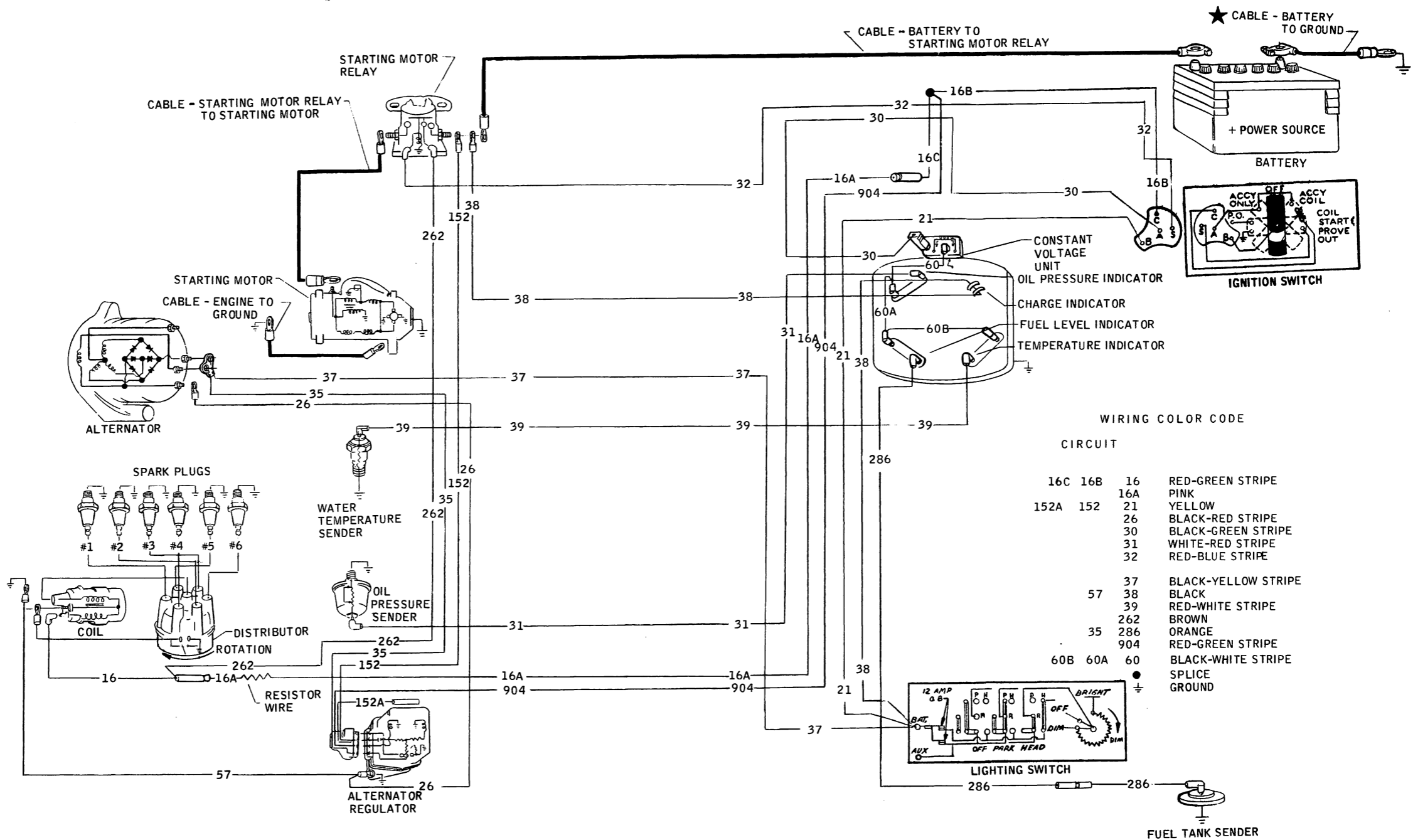
(A) ALL LETTERS CIRCLED AS SHOWN INDICATE CONNECTORS

1969 BRONCO FUEL TANK (AUXILIARY)



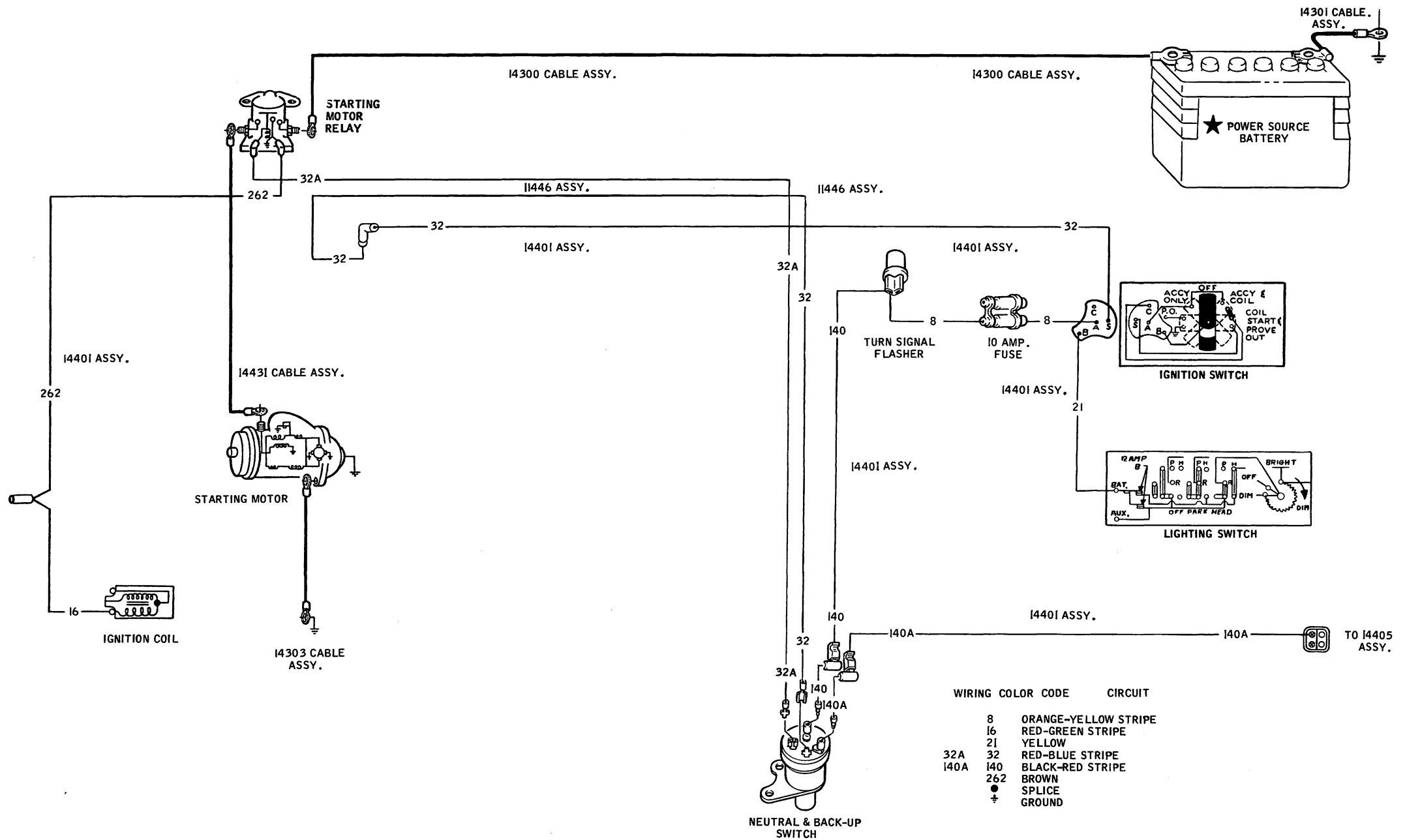
WIRING COLOR CODE

- 21 YELLOW
- 297A 297 BLACK-GREEN STRIPE
- 399 BROWN
- R RED
- 0 ORANGE
- SPLICE
- ⊥ GROUND

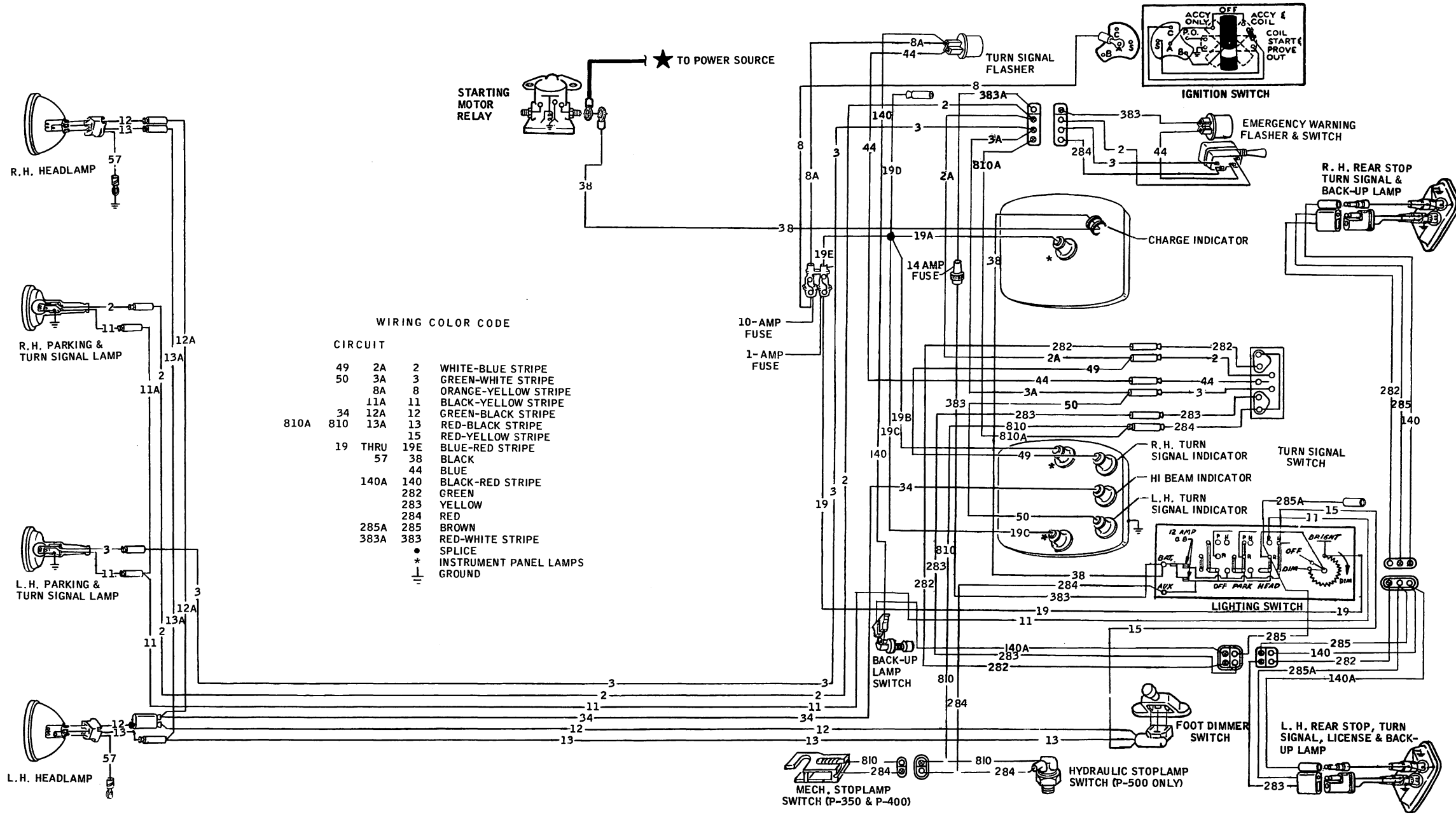


**1969 P-SERIES IGNITION, STARTING, CHARGING & GAUGES (GASOLINE)**

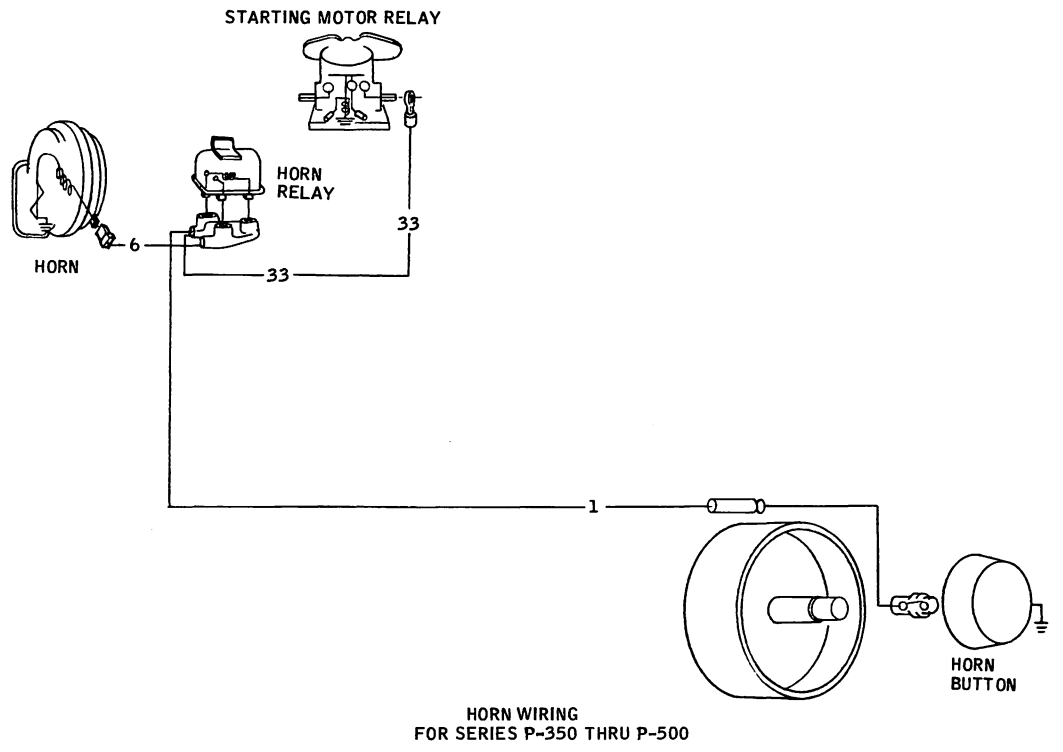
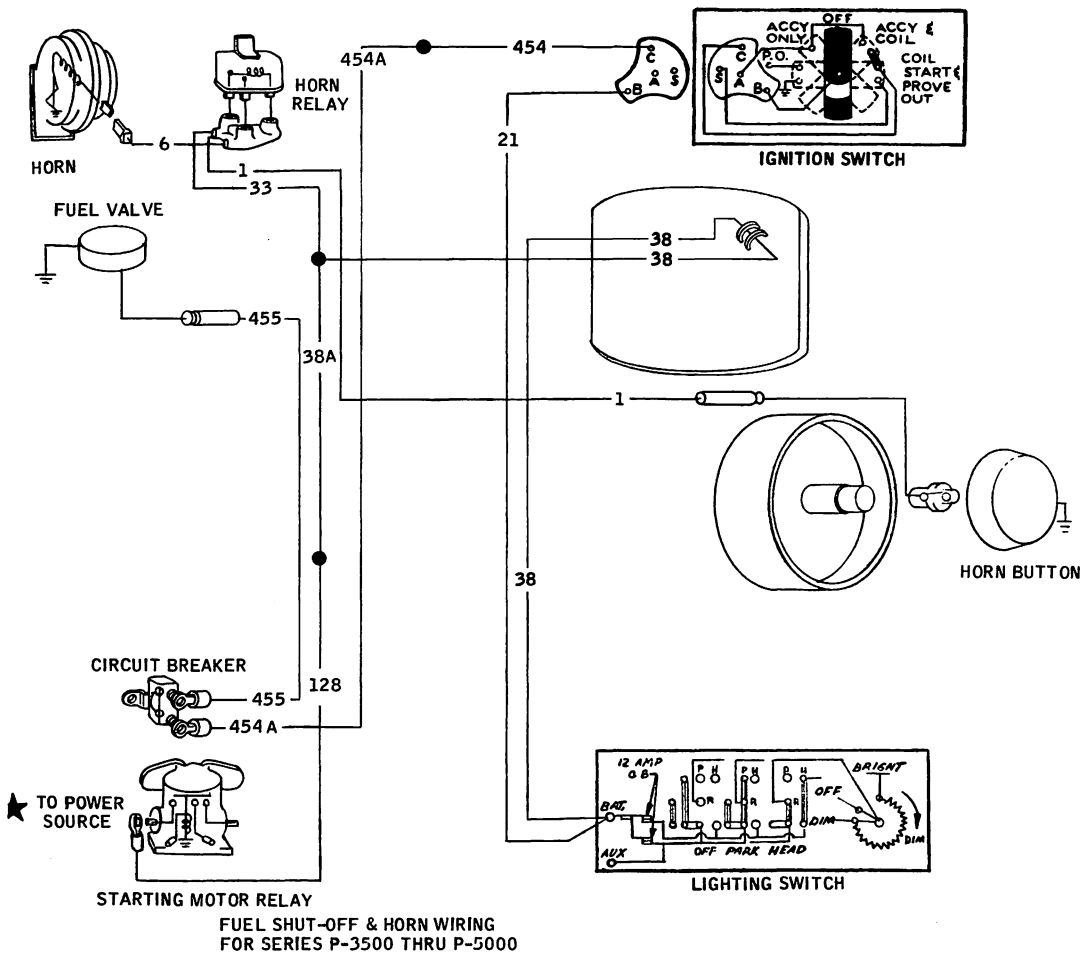




1969 P-SERIES STARTING STANDARD TRANSMISSION (GASOLINE)

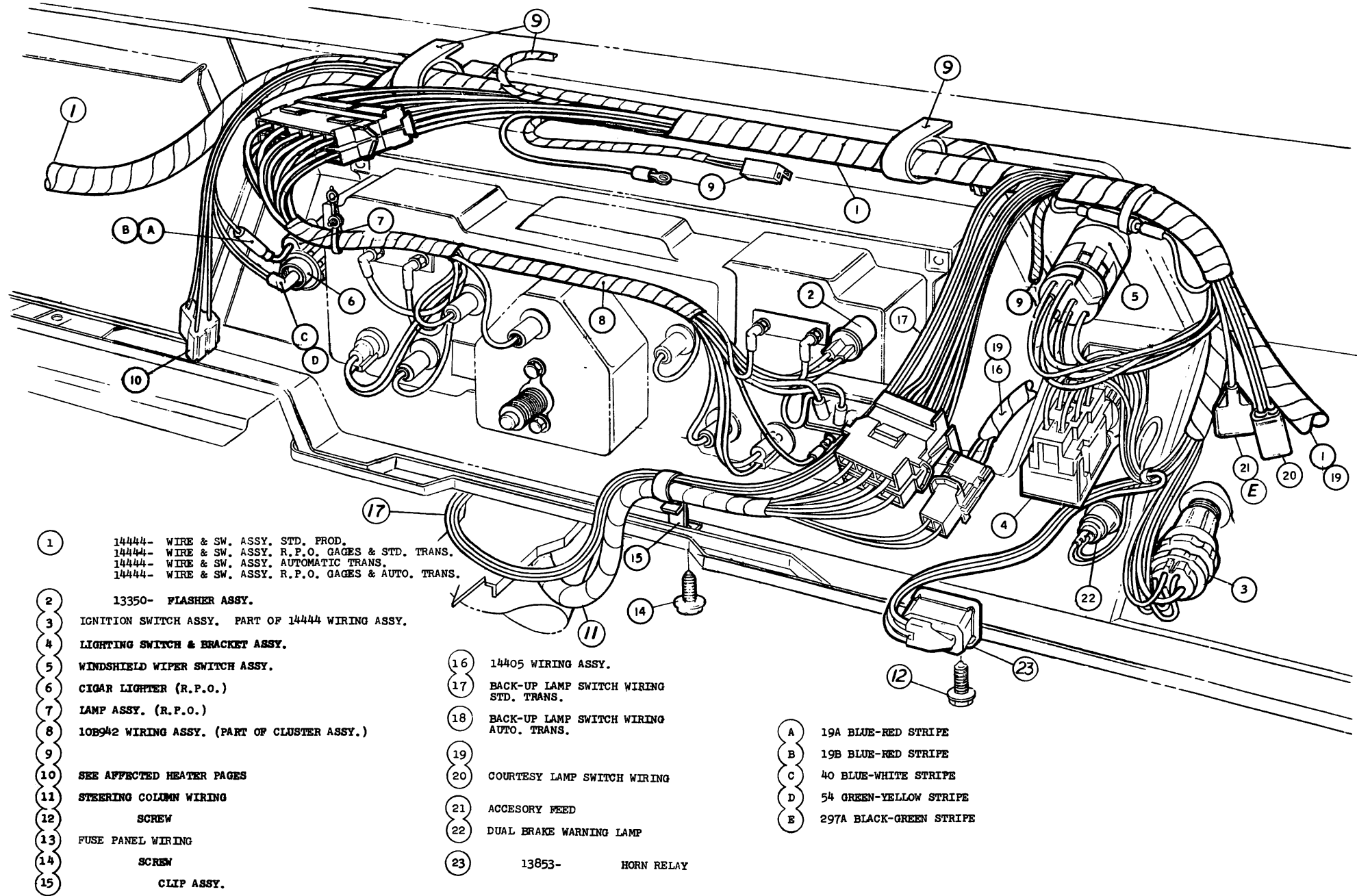


**1969 P-SERIES EXTERIOR LAMPS, INSTRUMENT LIGHTS, TURN SIGNAL LIGHTS & EMERGENCY WARNING FLASHER 8-E16**



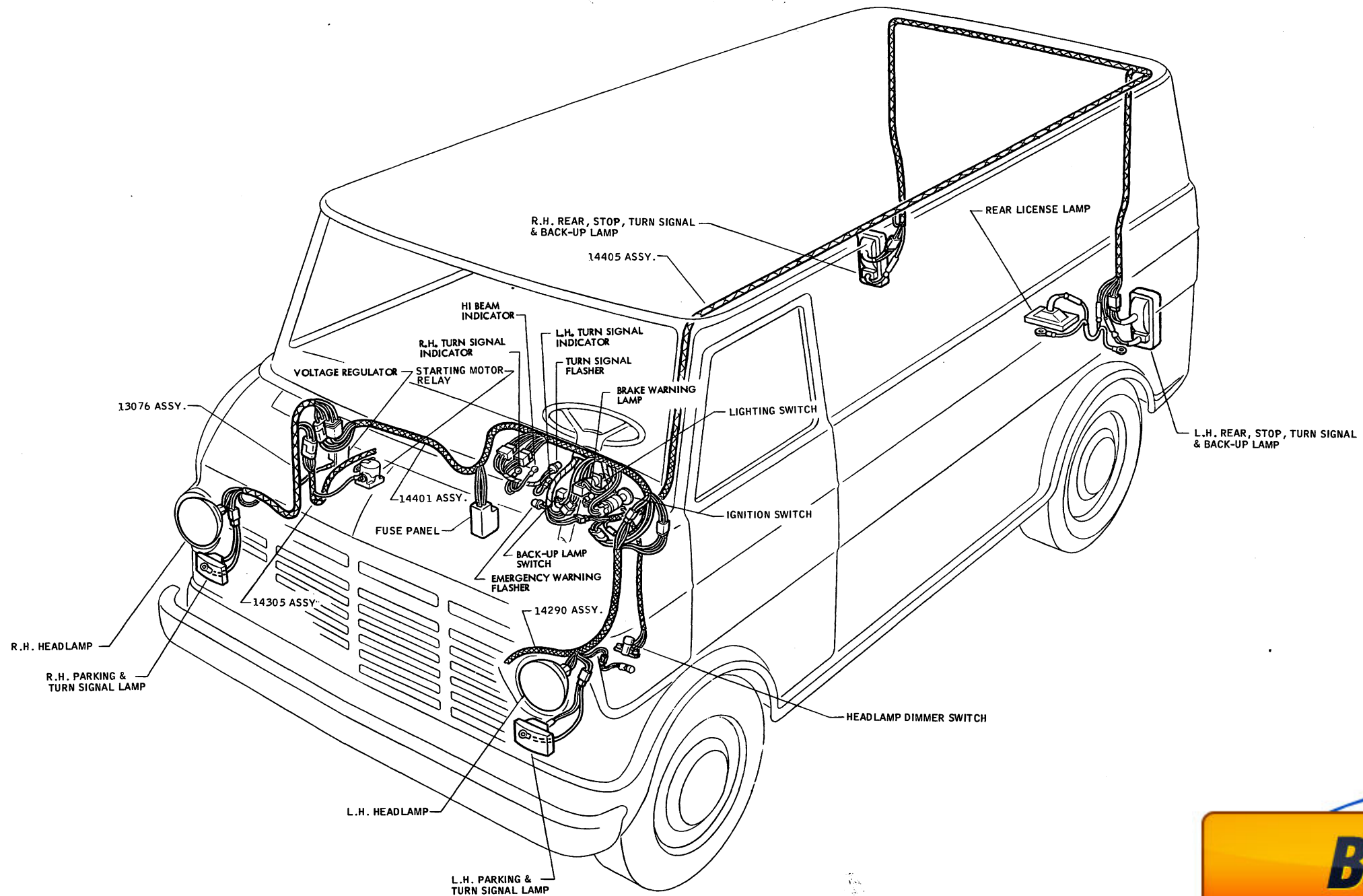
**WIRING COLOR CODE**

CIRCUIT	DESCRIPTION
1	BLUE-YELLOW STRIPE
6	YELLOW-GREEN STRIPE
33	YELLOW
21	YELLOW
128	38A 38 BLACK
454	RED-GREEN STRIPE
455	GREEN-RED STRIPE
●	SPLICE
+	GROUND



- |   |  |  |
|---|--|--|
| <p>1 14444- WIRE &amp; SW. ASSY. STD. PROD.<br/>         14444- WIRE &amp; SW. ASSY. R.P.O. GAGES &amp; STD. TRANS.<br/>         14444- WIRE &amp; SW. ASSY. AUTOMATIC TRANS.<br/>         14444- WIRE &amp; SW. ASSY. R.P.O. GAGES &amp; AUTO. TRANS.</p> <p>2 13350- FLASHER ASSY.</p> <p>3 IGNITION SWITCH ASSY. PART OF 14444 WIRING ASSY.</p> <p>4 LIGHTING SWITCH &amp; BRACKET ASSY.</p> <p>5 WINDSHIELD WIPER SWITCH ASSY.</p> <p>6 CIGAR LIGHTER (R.P.O.)</p> <p>7 LAMP ASSY. (R.P.O.)</p> <p>8 10B942 WIRING ASSY. (PART OF CLUSTER ASSY.)</p> <p>9</p> <p>10 SEE AFFECTED HEATER PAGES</p> <p>11 STEERING COLUMN WIRING</p> <p>12 SCREW</p> <p>13 FUSE PANEL WIRING</p> <p>14 SCREW</p> <p>15 CLIP ASSY.</p> | <p>16 14405 WIRING ASSY.</p> <p>17 BACK-UP LAMP SWITCH WIRING STD. TRANS.</p> <p>18 BACK-UP LAMP SWITCH WIRING AUTO. TRANS.</p> <p>19</p> <p>20 COURTESY LAMP SWITCH WIRING</p> <p>21 ACCESSORY FEED</p> <p>22 DUAL BRAKE WARNING LAMP</p> <p>23 13853- HORN RELAY</p> | <p>A 19A BLUE-RED STRIPE</p> <p>B 19B BLUE-RED STRIPE</p> <p>C 40 BLUE-WHITE STRIPE</p> <p>D 54 GREEN-YELLOW STRIPE</p> <p>E 297A BLACK-GREEN STRIPE</p> |
|---|--|--|

## 1969 ECONOLINE INSTRUMENT PANEL WIRING



## 1969 ECONOLINE EXTERIOR LIGHTS & TURN SIGNALS

